



**NUMBER:** 18-019-03

**GROUP:** Vehicle  
Performance

**DATE:** May 2, 2003

*This bulletin is supplied as technical information only and is not an authorization for repair. No part of this publication may be reproduced, stored in a retrieval system, or transmitted, in any form or by any means, electronic, mechanical, photocopying, or otherwise, without written permission of DaimlerChrysler Corporation.*

**THIS BULLETIN IS BEING PROVIDED IN ADVANCE. THE MDS2 MUST BE OPERATING WITH CIS CD2133 OR HIGHER, AVAILABLE MAY 26, 2003.**

**SUBJECT:**

Flash: Engine Spark Knock Using 91 Octane Gasoline

**OVERVIEW:**

This bulletin involves selectively erasing and reprogramming the Powertrain Control Module (PCM) with new software.

**MODELS:**

1997 - 2002 (SR) Viper

**NOTE: THIS BULLETIN APPLIES TO DOMESTIC MARKET VEHICLES.**

**SYMPTOM/CONDITION:**

Vehicle operator may experience engine spark knock using 91 Octane gasoline, when accelerating at medium to heavy throttle.

**DIAGNOSIS:**

Using a Scan Tool (DRBIII®) with the appropriate Diagnostic Procedures Manual, verify all engine systems are functioning as designed. If DTCs are present record them on the repair order and repair as necessary before proceeding further with this bulletin.

If the vehicle operator describes the Symptom/Condition and is using premium 91 octane gasoline, perform the Repair Procedure.

**PARTS REQUIRED:**

Qty.	Part No.	Description
1	04669020	Label, Authorized Software Update
1	04275086AB	Label, Authorized Modification

**EQUIPMENT REQUIRED:**

NPN	Battery Charger
CH2002	General Purpose Interface Bus Cable Assembly
CH6000A	Scan Tool (DRBIII®)

CH7000/7001	J1962 Cable
	TechCONNECT Workstation

**REPAIR PROCEDURE:**

**NOTE: WHENEVER A CONTROLLER IS REPLACED OR REPROGRAMMED, THE SOFTWARE IN THE CONTROLLER AND DRBIII® MUST BE VERIFIED AS HAVING THE LATEST REVISION LEVEL.**

1. Connect a battery charger and set as close to 14 volts charge as possible.
2. Flash the PCM using the TechCONNECT/MDS2 and DRBIII®.

**NOTE: DUE TO THE PCM REPROGRAMMING PROCEDURE, A DTC MAY BE SET IN OTHER MODULES (TCM, BCM, MIC, SKIM, ETC.) WITHIN THE VEHICLE, IF SO EQUIPPED. SOME DTC'S MAY CAUSE THE MIL TO ILLUMINATE. ALL DTC'S RELATE TO A LOSS OF COMMUNICATIONS WITH THE MODULE THAT IS BEING REPROGRAMMED. CHECK ALL MODULES, RECORD THE FAULTS, AND ERASE THESE FAULTS PRIOR TO RETURNING THE VEHICLE TO THE CUSTOMER. ERASE ANY FAULTS IN THE PCM ONLY AFTER ALL OTHER MODULES HAVE HAD THEIR FAULTS ERASED.**

**NOTE: THE FOLLOWING STEPS ARE REQUIRED BY LAW.**

3. Type the necessary information on the "Authorized Software Update Label" p/n 04669020 (Fig. 1). Attach the label to the PCM as necessary and cover the label(s) with the clear plastic overlay.

**CHRYSLER CORPORATION**

P/N:

DLR CODE:

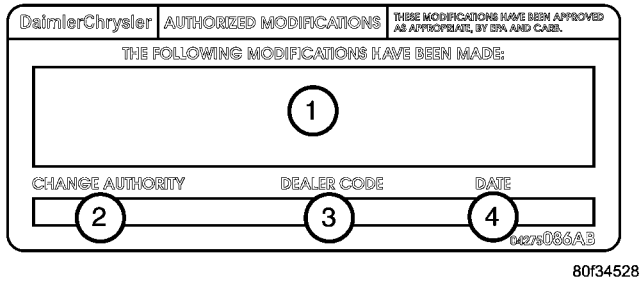
DATE:

AUTHORIZED SOFTWARE UPDATE

80bb0a94

**Fig. 1 AUTHORIZED SOFTWARE UPDATE LABEL**

4. Type the necessary information on the "Authorized Modification Label" p/n 04275086AB and attach near the VECI label (Fig. 2).



**Fig. 2 AUTHORIZED MODIFICATION LABEL**

- 1 - POWERTRAIN CONTROL MODULE P/N (INSERT P/N) USED
- 2 - CHANGE AUTHORITY: TSB XX-XXX-XX
- 3 - DEALER CODE: XXXXX
- 4 - DATE: XX-XX-XX

**POLICY:**

Reimbursable within the provisions of the warranty.

**TIME ALLOWANCE:**

Labor Operation No:	Description	Amount
08-19-36-98	Reprogram Powertrain Control Module	0.5 Hrs.

**FAILURE CODE:**

FM	Flash Module
----	--------------