



NUMBER: 18-024-03

GROUP: Vehicle
Performance

DATE: June 20, 2003

This bulletin is supplied as technical information only and is not an authorization for repair. No part of this publication may be reproduced, stored in a retrieval system, or transmitted, in any form or by any means, electronic, mechanical, photocopying, or otherwise, without written permission of DaimlerChrysler Corporation.

THIS BULLETIN IS BEING PROVIDED IN ADVANCE. THE MDS2 MUST BE OPERATING WITH CIS CD2136 OR HIGHER, AVAILABLE JULY 7, 2003.

SUBJECT:

Flash: MIL Illumination, Diagnostic Trouble Codes (DTC's), and/or Poor Idle Quality After Cold Start

OVERVIEW:

This bulletin involves selectively erasing and reprogramming the Powertrain Control Module (PCM) with new software.

MODELS:

2003 (ZB) Viper

NOTE: THIS BULLETIN APPLIES TO VEHICLES BUILT ON OR BEFORE MARCH 11, 2003 (MDH 0311XX).

SYMPTOM/CONDITION:

Vehicle operator may experience MIL illumination and/or poor idle quality following a cold start.

Technician may experience the following DTC(s):

P1486 - EVAP Leak Monitor Pinched Hose Found.

P1494 - Leak Detection Pump Switch or Mechanical Fault.

DIAGNOSIS:

Using a Scan Tool (DRBIII®) with the appropriate Diagnostic Procedures Manual, verify all engine systems are functioning as designed. If DTCs are present, other than those listed above, record them on the repair order and repair as necessary before proceeding further with this bulletin.

If the vehicle operator experiences the Symptom/Condition, perform the Repair Procedure.

PARTS REQUIRED:

Qty.	Part No.	Description
1	04669020	Label, Authorized Software Update
1	04275086AB	Label, Authorized Modification

EQUIPMENT REQUIRED:

NPN	Battery Charger
CH2002	General Purpose Interface Bus Cable Assembly
CH6000A	Scan Tool (DRBIII®)
CH7000/7001	J1962 Cable
	TechCONNECT Workstation

REPAIR PROCEDURE:

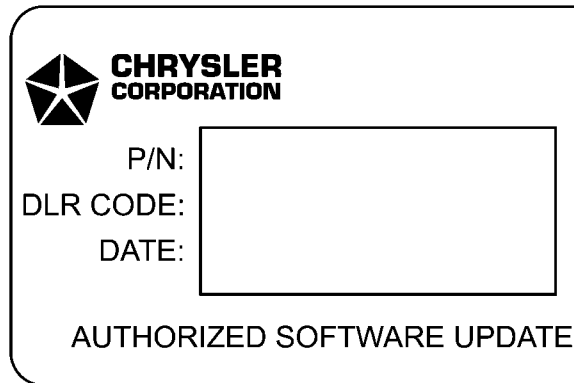
NOTE: WHENEVER A PCM/TCM IS REPLACED OR REPROGRAMMED, THE SOFTWARE IN THE CONTROLLER AND DRBIII® MUST BE VERIFIED AS HAVING THE LATEST REVISION LEVEL. IF A CONTROLLER SOFTWARE UPDATE FLASH IS AVAILABLE, COMPLETE THE FLASH AND LABELING REQUIREMENT AS DIRECTED IN THE APPROPRIATE SERVICE BULLETIN IDENTIFIED ON THE TechCONNECT/MDS2.

1. Connect a battery charger and set as close to 14 volts charge as possible.
2. Flash the PCM using the TechCONNECT/MDS2 and DRBIII®.

NOTE: DUE TO THE PCM REPROGRAMMING PROCEDURE, A DTC MAY BE SET IN OTHER MODULES (TCM, BCM, MIC, SKIM, ETC.) WITHIN THE VEHICLE, IF SO EQUIPPED. SOME DTC'S MAY CAUSE THE MIL TO ILLUMINATE. ALL DTC'S RELATE TO A LOSS OF COMMUNICATIONS WITH THE MODULE THAT IS BEING REPROGRAMMED. CHECK ALL MODULES, RECORD THE FAULTS, AND ERASE THESE FAULTS PRIOR TO RETURNING THE VEHICLE TO THE CUSTOMER. ERASE ANY FAULTS IN THE PCM ONLY AFTER ALL OTHER MODULES HAVE HAD THEIR FAULTS ERASED.

NOTE: THE FOLLOWING STEPS ARE REQUIRED BY LAW.

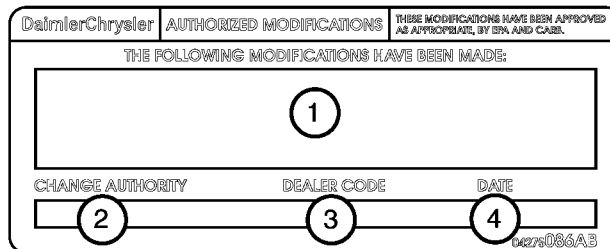
3. Type the necessary information on the "Authorized Software Update Label" p/n 04669020 (Fig. 1). Attach the label to the PCM as necessary and cover the label(s) with the clear plastic overlay.



80bb0a94

Fig. 1 AUTHORIZED SOFTWARE UPDATE LABEL

4. Type the necessary information on the “Authorized Modification Label” p/n 04275086AB and attach near the VECI label (Fig. 2).



80f34528

Fig. 2 AUTHORIZED MODIFICATION LABEL

- 1 - POWERTRAIN CONTROL MODULE P/N (INSERT P/N) USED
- 2 - CHANGE AUTHORITY: TSB XX-XXX-XX
- 3 - DEALER CODE: XXXXX
- 4 - DATE: XX-XX-XX

POLICY:

Reimbursable within the provisions of the warranty.

TIME ALLOWANCE:

Labor Operation No:	Description	Amount
08-19-37-95	Reprogram Powertrain Control Module	0.5 Hrs.

FAILURE CODE:

FM	Flash Module
----	--------------